



# PrestaShop AI SEO Audit Module



AI  
SEO Audit

## User Guide

Compatibility: PrestaShop v1.7.x – v9.x.x

For Module Version: 1.0.0



## Intended Audience

The content of this document is designed to facilitate the users - managers, supervisors, and others of the **Advanced AI SEO Audit Module**. A step-by-step instruction has been added to this document to help users to install the module on PrestaShop.

As a safe practice, always back up your files and database before installing any module on PrestaShop. If you are looking for someone to install the module, we can do it for you as well. Just go to the support section, share the order ID to expedite the installation process.

Once you have installed it, please see the User Guide to help you understand how to use the module to its full capacity. If you still have questions, feel free to contact us on the support platform where you bought this module.

If you have any custom requirements, feel free to touch base with us.



Intended Audience-----	2
Overview -----	4
Installation Instructions-----	5
User Guide -----	6
Module Configuration-----	6
SEO Dashboard -----	9
SEO Analysis -----	11
Meta Manager -----	12
SEO Image ALT -----	14
AI Tools -----	16
URL and Redirects-----	17
Clean URLs -----	19
Indexation-----	22
Robots & LLMs -----	23
Sitemap and Feeds-----	25
Canonical & Hreflang-----	26
Schema & Social -----	27
FAQ Manager-----	28
Linking and Stats -----	30
Linking Rules-----	32
System diagnostics-----	33
Product/Category Listing Interface -----	35
Product - SEO Analysis -----	36
Disclaimer -----	37
Support -----	37
Customization -----	37



## Getting Started!

### Overview

---

FMM AI SEO Audit & Optimization Module is an advanced SEO engine that automatically audits and optimizes every critical element of your PrestaShop store to improve search visibility and performance. It intelligently enhances and clean URLs, Meta tags, sitemaps, schema, redirects, 404 monitoring, AI bot control, llms.txt, image ALT text, and internal linking based on AI-driven analysis and optimization rules.

Powered by ChatGPT, Gemini, and Mistral, it ensures smarter, faster, and more accurate SEO improvements across your store. The module provides a centralized optimization system that helps administrators maintain a fully clean, structured, and search-engine-ready e-commerce environment from a single dashboard.

Compatible with: PrestaShop 1.7 to 9.x



## Installation Instructions

---

1. Go to Modules → Module Manager → Click **Upload a Module** → Browse for the Downloaded Module ZIP file and click **upload this module**.
2. Click Proceed with **Installation**.
3. Make sure Cache is disabled in **Advanced Parameters** → **Performance**.
4. Go to Modules → Modules Manager → **FMM AI SEO Optimizer**.



## User Guide

### Module Configuration

After installing the module, go to **Modules > Module Manager > FMM AI SEO Optimizer**. You will be landed on the dashboard from where you can configure the module and have quick access to the module's features. Here you can view all the configurations for your module.

**FMM AI SEO Optimizer** How it works

Premium AI-powered SEO suite for PrestaShop. Manage meta, sitemaps, schema, redirects, AI content, and more — all from one beautiful dashboard.

v1.0.0 | PrestaShop 1.7 – 9 | PHP 7.2 – 8.5

**First-time setup**  
Enable live mode and add your API keys from the Settings tab.  
[Open Settings](#)

PRESTASHOP MODULE **Enabled** | FRONT OFFICE **Active** | AI PROVIDER **Gemini Connected** | SITEMAP **Enabled** | DATABASE **Ready**

**Quick Access**  
Open any module section directly.

- AI SEO Optimizer
- Dashboard
- SEO Analysis
- Meta Manager
- SEO Image ALT
- AI Tools
- URLs & Redirects
- Clean URLs
- Indexation
- Robots & LLMs
- Sitemap & Feeds
- Canonical & Hreflang
- Schema & Social
- FAQ Manager
- Linking & Stats
- Linking Rules
- System diagnostics
- Settings

**Options & keys**  
AI keys, feature toggles, and webmaster tags are in the Settings tab. System diagnostics (same SEO menu) covers environment checks and AI connectivity.

**Configure the module**  
Use Settings for every switch and API field — this page stays a lightweight hub. [Open Settings](#)

The **Settings** tab is where you manage keys, toggles, and verification for your module.

- **AI Provider:** Securely store your API keys. Only trusted admins should access this. Settings here affect AI features like Meta and Image ALT.
- **Feature Switches:** Control modules from a single toggle. Turning off a master switch disables related functionality across sub-pages.
- **Storefront:** Add meta tags and verification codes to your site's HTML so search engines can confirm ownership.



## Choosing the AI Provider

A screenshot of the 'AI Provider' configuration interface. At the top, there is a title 'AI Provider' with a pencil icon. Below it is a light blue information box with a circular icon containing an 'i' and the text: 'Choose your AI provider and paste your API key. The module automatically uses the best model for each task.' The main configuration area has two fields: 'AI provider' is a dropdown menu currently set to 'Google Gemini', with a note below it: 'Switch between OpenAI (ChatGPT), Google Gemini, and Mistral AI.'; 'Gemini API key' is a text input field with a search icon on the left and a masked key '.....' in the center, with a note below it: 'Get your key at aistudio.google.com → Get API key. No Google Cloud project required. Shown masked like the OpenAI field.' In the bottom right corner, there is a dark grey button with a save icon and the text 'Save AI'.

Select your AI provider and enter your API key. The module automatically picks the best model for each task.

- **AI Provider:** Choose between OpenAI (ChatGPT), Google Gemini, or Mistral AI.
- **API Key:** Paste your key securely. No extra setup needed for Google Gemini.
- **For ChatGPT:** Get your key at **platform.openai.com** → **API Keys**. The value is shown masked (password field). Leave unchanged or edit, then click **Save AI**. Saving other sections does not clear the key when this field is left as-is.
- **For Mistral:** Get your key at **console.mistral.ai** → **API keys**. Uses the Mistral-small-latest model for text tasks (meta, ALT, AI Tools).

Click **Save AI** to apply your settings.



## Features Switches

Toggle your storefront features on or off with a single master switch. Each option controls specific functionality:

**Features**

Master on/off switches for the storefront. Fine-tuning (meta rules, schema types, canonical rules, referrer options) stays on each dedicated tab; values are shared with these toggles.

- Meta rule engine (titles & descriptions)  Yes
- Open Graph meta  Yes
- Twitter / X Cards  Yes
- First-party referrer tracking  Yes
- Canonical URLs in head  Yes
- Hreflang alternate links  Yes
- Sitemap  Yes
- Auto-ping search engines  Yes
- llms.txt  Yes
- llms-full.txt  Yes
- 404 tracking  Yes
- Auto-redirect on URL change  Yes  
When a product or category friendly URL (link rewrite) changes in the back office, a 301 redirect is added automatically in URLs & Redirects.
- Theme breadcrumb navigation  Yes  
When off, the breadcrumb trail in the theme is cleared. BreadcrumbList JSON-LD is controlled separately under Schema & Social.

[Save features](#)

- **Meta & Social Tags:** Enable meta titles, descriptions, Open Graph, Twitter/X Cards.
- **Tracking & Redirects:** Turn on first-party referrer tracking, 404 tracking, and auto-redirects for URL changes.
- **SEO & Sitemap:** Activate canonical URLs, hreflang links, sitemap, auto-ping search engines, and robots.txt.
- **Navigation:** Control theme breadcrumb display.

Click **Save Features** to apply changes.



## Webmaster Verification

Enable Meta tags for search engine verification and paste the verification tokens for each provider.

**Webmaster Verification**

When the module is enabled and the switch below is on, each non-empty value is output as the correct meta tag in your storefront HTML head (right after the page title when the theme supports it; otherwise with the rest of the header). Paste only the verification token (the string inside content="..." from the meta tag each tool shows you), not the full HTML tag. Leave a field empty to skip that provider.

Output verification meta tags on the storefront  **Yes**  
Turn off to keep saved tokens in the database but stop printing meta tags (useful while testing).

Google verification

Bing verification

Yandex verification

Pinterest verification

Baidu verification

[Save webmaster](#)

- **Output Verification Meta Tags:** Turn on to add tokens to your storefront HTML.
- **Providers Supported:** Google, Bing, Yandex, Pinterest, Baidu.
- Leave any field empty to skip that provider.

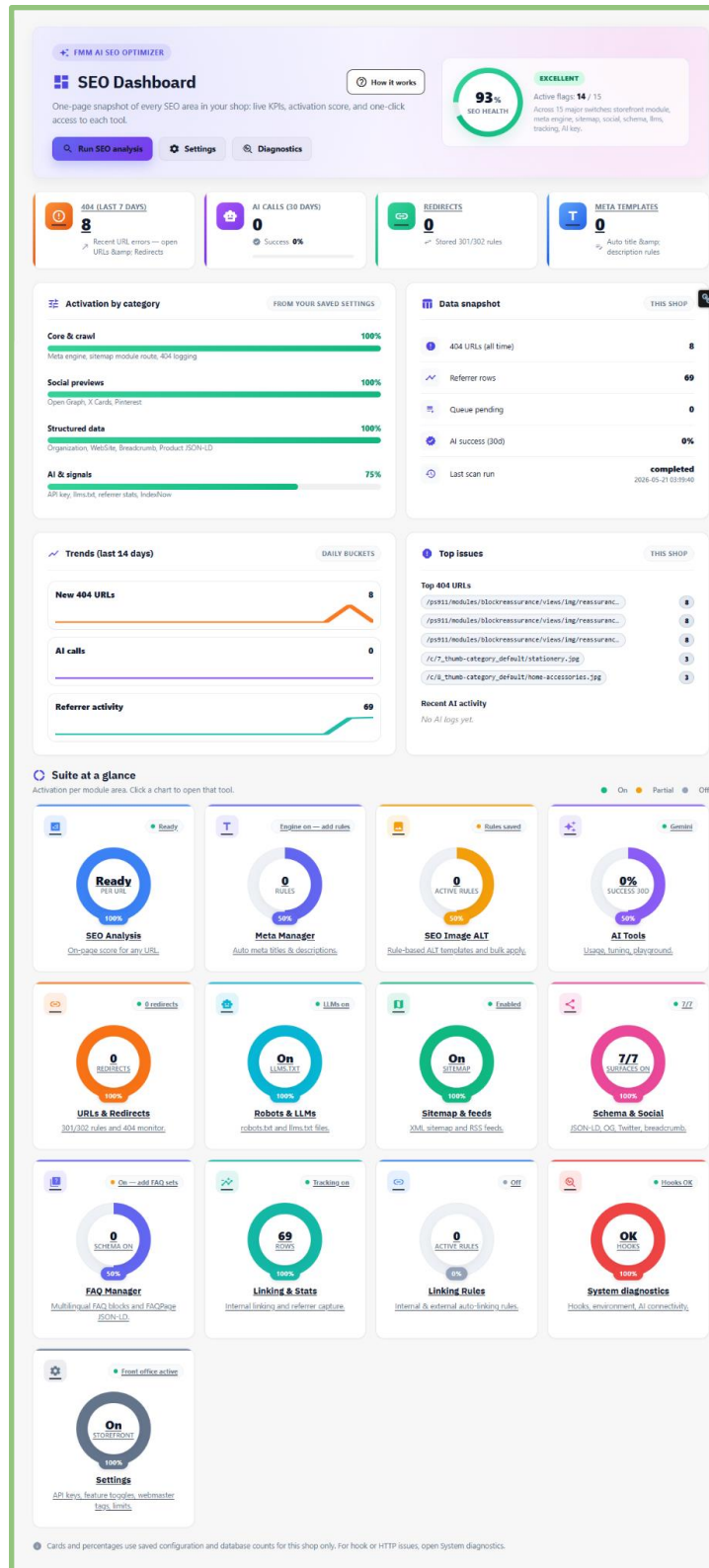
Click **Save Webmaster** to apply your changes.

## SEO Dashboard

From the menu, you can visit the Dashboard and other modules' features.

Your starting point for module health and quick access to tools.

- **SEO Health:** See a percentage of how many key features are active.
- **Quick Actions:** Jump to SEO Analysis, Settings, or Diagnostics in one click.
- **Tool Cards:** Each card opens the relevant module tab (Meta Manager, Sitemap, Redirects, etc.).



**How to use:**

Connect AI keys in Settings if using AI features, enable the areas you need, and return here to check status or open any tab quickly.



## SEO Analysis

Run a quick scan of your storefront pages to check SEO elements like titles, meta descriptions, headings, images ALT, Open Graph, Twitter Cards, and JSON-LD schema.

**SEO Analysis**

Run a site-wide quick scan on products, categories, and CMS pages, or analyze a single URL at the bottom of this page. Checks cover title, description, canonical, headings, images ALT, Open Graph, Twitter Cards, and JSON-LD schema.

**Site scan**

Scan a sample of storefront pages in one run.

**Site scan**

Scan storefront pages in this browser session (not a background crawler). Choose a quick sample or a full-catalog run.

**Scan scope**

- Sample: limit how many products, categories, and CMS URLs are scanned (fast).
- Full catalog: all active products, categories, and CMS pages (up to safe limits; may take a long time).

**Products (max)** 20 **Categories (max)** 10 **CMS pages (max)** 10 **Timeout (sec)** 10

**Run quick scan** Last run: 2026-05-21 03:19:40 — Status: completed — URLs: 35/35

**Results Overview:**

- OVERALL: 83 / 100
- ALT: 89 / 100
- HEADINGS: 98 / 100
- META: 65 / 100
- CANONICAL: 60 / 100
- HREFLANG: 99 / 100
- ROBOTS: 73 / 100
- SCHEMA: 99 / 100

**Scan issues list**

Severity	Type	URL	Details	Related tab
WARNING	robots_noindex	https://aiseoptimizer.bestprestashopmodules.net/content/delivery	Meta robots contains noindex.	→ Indexation
WARNING	canonical_multiple	https://aiseoptimizer.bestprestashopmodules.net/content/delivery	Multiple canonical tags (2).	→ Canonical & Hreflang
WARNING	meta_description_short	https://aiseoptimizer.bestprestashopmodules.net/content/delivery	Meta description looks short (36 chars).	→ Meta Manager
WARNING	meta_title_short	https://aiseoptimizer.bestprestashopmodules.net/content/delivery	Title looks short (8 chars).	→ Meta Manager
WARNING	robots_noindex	https://aiseoptimizer.bestprestashopmodules.net/content/legal-notice	Meta robots contains noindex.	→ Indexation
WARNING	canonical_multiple	https://aiseoptimizer.bestprestashopmodules.net/content/legal-notice	Multiple canonical tags (2).	→ Canonical & Hreflang

**URL to analyze**

Fetch and check a single storefront page (same domain only).

**URL to analyze** **Focus keyword (optional)**

Paste a full URL or a path like /en/3-product.html We check if it appears in title/H1/description.

https://aiseoptimizer.bestprestashopmodules.net/ e.g. hummingbird t-shirt

**Analyze now**

- **Site Scan:** Choose a sample or full catalog of products, categories, and CMS pages.
- **Quick Scan:** Limits the number of pages for a faster overview.
- **Results Overview:** See overall and category-specific scores (ALT, Headings, Meta, Canonical, Hreflang, Robots, and Schema).
- **Issue List:** Detailed warnings for items needing attention, with links to the relevant module tab.
- **Single URL Analysis:** Enter a specific page URL and optional focus keyword to check individual page SEO.

Click **Run Quick Scan** or **Analyze Now** to start scanning and get actionable insights.



## Meta Manager

Create dynamic Meta titles and descriptions templates for each page type using rules.

**Meta Manager**

Define dynamic meta title and description templates per page type. Rules are evaluated in order — the first matching rule wins. Image ALT will live in a separate tab later.

[Rules only — no per-URL manual list](#)

[How it works](#)

**Enable on storefront**

On  Off [Save](#)

**Meta rules** 2

*Lower position number runs first. Use specific rules first, then a generic "match all" rule last.*

Position	Name	Page type	Scope	Updated	Enabled	Actions
2	Category Meta ID 2	CATEGORIES	cat*3	05/21/2026	<input checked="" type="checkbox"/>	<a href="#">Edit</a> <a href="#">Delete</a>
1	Product Meta ID 1	PRODUCTS		05/21/2026	<input checked="" type="checkbox"/>	<a href="#">Edit</a> <a href="#">Delete</a>

- **Rule Order:** The first matching rule wins; use specific rules first, then generic ones.
- **Page Types Supported:** Products, Categories, Manufacturers and CMS pages (image ALT handled separately).
- **Meta Rules Table:** Shows all rules with position, scope, status, and actions with editing or delete options.
- **Enable on Storefront:** Turn on/off and click **Save** to apply rules.



## Create New Meta Rules

Set up dynamic meta titles and descriptions for products, categories, brands, or CMS pages.

✎ New rule
⊗

<b>Rule name (internal)</b>	<b>Page type</b>	<b>Position</b>	<b>Active</b>
<input type="text"/>	Products ▼	0	Yes ▼

*0 = append at end when creating a new rule; when editing, 0 keeps current position.*

**Conditions**

Choose what this rule applies to. The JSON field below is updated automatically when you save.

PRODUCT SCOPE

All products
  Specific products
  Filter by categories and/or brands

STOCK & PRICE (PRODUCTS ONLY)

<b>Stock</b>	<b>Min price (tax incl.)</b>	<b>Max price (tax incl.)</b>
Any ▼	<input type="text"/>	<input type="text"/>

Advanced: edit raw JSON

**🌐 Templates per language**

**Products:** {product\_name}, {reference}, {brand}, {category\_name}, {price}, {shop\_name}, {short\_description} | 
 **Categories:** {category\_name}, {parent\_name}, {description}, {shop\_name} | 
 **Brands:** {brand\_name}, {short\_description}, {shop\_name} | 
 **CMS:** {cms\_title}, {head\_seo\_title}, {meta\_title}, {meta\_description}, {shop\_name}

en

**Meta title template** 🔍 AI

0 / 70

**Meta description template** 🔍 AI

0 / 160

💾 Save rule
Cancel

- **Rule Details:** Enter an internal name, select page type, position, and activation status.
- **Conditions:** Apply the rule to all products, specific products, or by category/brand. Optionally set stock and price filters.
- **Templates per Language:** Use placeholders like {product\_name}, {category\_name}, {brand\_name}, {shop\_name}, etc., to create meta title and description templates.
- Click **Save Rule** to apply.

This lets you automatically generate SEO-friendly metadata for multiple pages at once.



## SEO Image ALT

Create and apply ALT text rules in bulk for product images. This helps with accessibility, image search, and consistent naming.

**SEO Image ALT** How it works

Create ALT text rules and apply them in bulk to product images. Useful for accessibility, image search, and consistent naming.

**ALT rules**

Create multiple rules for different categories/products. Run each rule in safe batches.

STATUS	NAME	SCOPE	IMAGES	MODE	ACTIONS
Disabled	Default rule <small>#( \$r.id_fmalseooptimizer_alt_rule intval )</small>	All	Cover	Only empty	<span>Edit</span> <span>Run</span> <span>Delete</span>

**Variables:** {product\_name} {category\_name} {brand} {reference} {shop\_name} {id\_product} {id\_image} {image\_position} {is\_cover}

- **ALT Rules Table:** Manage rules with status, scope, images, and mode.
- **Variables:** Use placeholders like {product\_name}, {category\_name}, {brand}, {reference}, {shop\_name}, {id\_product}, {id\_image}, {image\_position}, {is\_cover}.
- **Actions:** Edit, run, or delete rules. Run rules in safe batches to update image ALT texts

This ensures all images have descriptive, SEO-friendly ALT text automatically.



## Create New Rules for ALT Text

Set up rules to automatically generate ALT text for product images in bulk.

**+ Add new rule**

Enabled  Yes

Rule name

Which images  Cover only

Update mode  Only empty ALT

Scope  All products  
 Specific categories  
*Products whose default category is checked below.*  
 Specific products

Template *Example: {product\_name} - {category\_name}*

**Variables:** {product\_name} {category\_name} {brand} {reference} {shop\_name} {id\_product} {id\_image} {image\_position}  
{is\_cover}

en

---

**⚡ Batch size**

*Applies per rule run. Click Run again to process next batch.*

**Images per language**

- **Enabled:** Turn the rule on or off.
- **Rule Name:** Enter an internal name for reference.
- **Image Selection:** Apply to cover images only or all images.
- **Update Mode:** Apply only to empty ALT fields or overwrite existing ones.
- **Scope:** Choose all products, specific categories, or individual products.
- **Template:** Use variables like {product\_name}, {category\_name}, {brand}, {reference}, {shop\_name}, {id\_product}, {id\_image}, {image\_position}, {is\_cover} to generate ALT text automatically.
- **Batch Size:** Set the number of images to process per run.

Click **Save Rule** or use **AI recommended template** to create ALT text templates quickly.



## AI Tools

Monitor and test AI usage safely without affecting your live shop.

### AI Tools

Usage from the last 30 days, generation tuning, a safe playground (no catalog writes), and AI queue jobs. API keys stay in Settings.

Settings
System diagnostics
Module overview

How it works

AI CALLS (30D)

**4**

Logged requests

SUCCESS RATE

**0%**

Same window

TOKENS (30D)

**0**

Approximate

EST. COST (USD)

**0.0000**

Rough estimate

**By provider**

Provider	Calls	Tokens
gemini	4	0

**By prompt type**

Type	Calls	Tokens
meta_template_suggest_description	2	0
meta_template_suggest_title	1	0
alt_rule_suggest	1	0

**Recent failures**

When	Type	Error
2026-05-21 06:14:54	alt_rule_suggest	HTTP 400 — API key not valid. Please pass a valid API key.
2026-05-21 06:05:19	meta_template_suggest_description	HTTP 400 — API key not valid. Please pass a valid API key.
2026-05-21 05:44:01	meta_template_suggest_description	HTTP 400 — API key not valid. Please pass a valid API key.
2026-05-21 05:43:53	meta_template_suggest_title	HTTP 400 — API key not valid. Please pass a valid API key.

**Recent activity**

When	Type	Status	Tok
2026-05-21 06:14:54	alt_rule_suggest	error	0
2026-05-21 06:05:19	meta_template_suggest_description	error	0
2026-05-21 05:44:01	meta_template_suggest_description	error	0
2026-05-21 05:43:53	meta_template_suggest_title	error	0

**AI queue (job\_type starts with ai\_)**

No AI-prefixed jobs in the queue snapshot.

**Generation tuning**

Short profile is used for titles and small fields; long profile for descriptions and rich text. The playground uses the short profile.

Temperature (short)

Temperature (long)

Max tokens (short)

Max tokens (long)

Save tuning

**Playground**

Use this like a quick test chat: you write a message, the module sends it to the AI provider you configured in Settings (using your API key), and you see the answer here.

It does not change any product, category, or page—only checks that AI works and lets you try wording. Each run is recorded in Recent activity for troubleshooting.

Provider: gemini

System (optional)

User message

Run



## FME Modules

- **Usage Overview:** See AI calls, success rate, token usage, estimated cost, and recent activity.
- **Playground:** Test prompts and model behavior. Output is not written to products or CMS until you apply it.
- **Generation Tuning:** Adjust short/long text settings like temperature and max tokens.
- **AI Queue:** Inspect queued jobs to troubleshoot or track progress.
- **Storefront Note:** Features like Meta Manager or Image ALT only apply AI output when rules are saved or bulk actions are run.
- **Settings:** API keys and models are configured in Settings, not here.

## URL and Redirects

Manage redirects, clean tracking parameters, and monitor 404 errors.

### URLs & Redirects

Manage 301/302 redirects, clean tracking parameters, and monitor 404 errors. Simple, fast, and safe — no overrides required.

UTM strips: On
404 monitors: On

How it works

**How it works**

Redirects + parameter cleanup run on the front-office only.

Manage redirects

---

#### Redirects

Add a redirect from a missing/old URL to a new URL. Use regex only if you know what you are doing.

**Source URL (path)**  
Example: /old-page or /old-page?foo=1 (if you want to match query string).

**Target URL**  
Can be relative (/new-url) or absolute (https://...).

**Redirect type**

301

**Active**

Yes

**Regex**

No

**Match query string**

No

Add redirect

#### Existing redirects (latest 200)

i No redirects yet.

---

#### 404 Monitor

When enabled, missing URLs are recorded so you can fix internal links or add redirects.

#### Latest 404s (latest 200)

Select open URLs below, then redirect them in one step. Redirects are active on the storefront immediately (301).

Select all open
 
 Redirect to homepage
 
or




 Redirect to URL

Homepage: <https://a1seooptimizer.bestprestashopmodules.net/>

Status	URL	Hits	Last seen	Actions
<input type="checkbox"/> Open	<a href="#">/ps911/modules/blockreassurance/views/img/reassurance/pack2/security.svg</a>	8	2026-05-20 09:48:35	<span style="border: 1px solid #ccc; padding: 2px 5px;">Mark resolved</span> <span style="border: 1px solid #ccc; padding: 2px 5px;">Create 301 to home</span>
<input type="checkbox"/> Open	<a href="#">/ps911/modules/blockreassurance/views/img/reassurance/pack2/parcel.svg</a>	8	2026-05-20 09:48:35	<span style="border: 1px solid #ccc; padding: 2px 5px;">Mark resolved</span> <span style="border: 1px solid #ccc; padding: 2px 5px;">Create 301 to home</span>
<input type="checkbox"/> Open	<a href="#">/ps911/modules/blockreassurance/views/img/reassurance/pack2/carrier.svg</a>	8	2026-05-20 09:48:35	<span style="border: 1px solid #ccc; padding: 2px 5px;">Mark resolved</span> <span style="border: 1px solid #ccc; padding: 2px 5px;">Create 301 to home</span>
<input type="checkbox"/> Open	<a href="#">/c/7_thumb-category_default/stationery.jpg</a>	3	2026-05-20 09:48:29	<span style="border: 1px solid #ccc; padding: 2px 5px;">Mark resolved</span> <span style="border: 1px solid #ccc; padding: 2px 5px;">Create 301 to home</span>
<input type="checkbox"/> Open	<a href="#">/c/8_thumb-category_default/home-accessories.jpg</a>	3	2026-05-20 09:48:29	<span style="border: 1px solid #ccc; padding: 2px 5px;">Mark resolved</span> <span style="border: 1px solid #ccc; padding: 2px 5px;">Create 301 to home</span>
<input type="checkbox"/> Open	<a href="#">/c/4_thumb-category_default/men.jpg</a>	2	2026-05-20 09:48:33	<span style="border: 1px solid #ccc; padding: 2px 5px;">Mark resolved</span> <span style="border: 1px solid #ccc; padding: 2px 5px;">Create 301 to home</span>
<input type="checkbox"/> Open	<a href="#">/c/5_thumb-category_default/women.jpg</a>	2	2026-05-20 09:48:33	<span style="border: 1px solid #ccc; padding: 2px 5px;">Mark resolved</span> <span style="border: 1px solid #ccc; padding: 2px 5px;">Create 301 to home</span>
<input checked="" type="checkbox"/> Resolved	<a href="#">/women/brown-bear-printed-sweater.html</a>	2	2026-05-21 10:42:57	



### Add Redirects

- Enter the old URL and the new URL.
- Select the redirect type: **301** (permanent) or **302** (temporary).
- Activate the redirect immediately.
- Use **Regex** or match query strings only if needed.
- Click **Add redirect** to save.

### Existing Redirects

- View the latest 200 redirects.
- Edit target URL or status code directly in the list.
- Keep redirects updated to ensure links and bookmarks continue working.

### 404 Monitor

- Tracks missing URLs automatically.
- Select one or multiple open 404s.
- Redirect to the homepage or a specific URL in one step.
- Each redirect marks the URL as resolved.

### Bulk Actions

- Tick multiple rows or **Select all open**.
- Use **Redirect to homepage** or enter a target URL.
- Click **Redirect to URL** to apply 301 redirects to all selected paths.
- Existing redirects from the same source are updated automatically.

### UTM / Tracking Cleanup

- Normalizes campaign query strings to avoid duplicate URLs.
- Enable carefully; test one campaign link at a time.

### Notes

- Redirects affect HTTP responses and canonical behavior.
- Always use **301** for permanent moves to maintain SEO signals.



## Clean URLs

Remove the numeric IDs from product, category and CMS URLs while keeping the existing URL structure. Configure the entities you want, and then apply on the storefront in one click.

**Clean URLs**

Remove the numeric IDs from product, category and CMS URLs while keeping the existing URL structure. Configure the entities you want, then apply on the storefront in one click.

Clean URLs LIVE
Friendly URLs ON
.htaccess writable
ps911

How it works

**Live on the storefront**

Clean URLs are active  
Since: 2026-05-20 05:46:55

View status

**1 Pre-flight status**

These are the prerequisites for going live. Everything in green means you are ready.

FRIENDLY URLS

Enabled

.HTACCESS FILE

Writable

SHOP CONTEXT

ps911

**Current URL rules**

These are the PrestaShop route patterns the module rewrites when you click Apply (only for entities you turn on below).

Setting	Current value (today)	PrestaShop default
PS_ROUTE_product_rule	{category}/{id}-{rewrite}{-:rean13}.html	{category}/{id}-{rewrite}{-:rean13}.html
PS_ROUTE_category_rule	{id}-{rewrite}	{id}-{rewrite}
PS_ROUTE_cms_rule	content/{id}-{rewrite}	content/{id}-{rewrite}
PS_ROUTE_cms_category_rule	content/category/{id}-{rewrite}	content/category/{id}-{rewrite}

**2 Settings**

Configure what you want, then save. Applying on the storefront is a separate, deliberate action in section 5.

**Master switch**

Required. Per-entity toggles below have no effect unless this is ON.

Yes

**Which URLs to clean**

Turn on the entities you want to clean. Each card shows a preview of the URL change.

**Products**

Remove the leading numeric ID from every product URL.

Yes

Today

/{category}/{id}-{rewrite}.html

After Apply

/{category}/{rewrite}.html

**Keep ".html" suffix**

Recommended: avoids collisions with category slugs.

Yes

**Categories**

Strip the ID from every category URL.

Yes

Today

/{id}-{rewrite}

After Apply

/{rewrite}

**CMS categories**

Strip the ID from CMS category URLs.

Yes

Today

/content/category/{id}-{rewrite}

After Apply

/content/category/{rewrite}

**CMS pages**

Strip the ID from every CMS page URL.

Yes

Today

/content/{id}-{rewrite}

After Apply

/content/{rewrite}

**Safety options**

These guardrails kick in automatically when Clean URLs are live. We strongly recommend leaving them ON.

**Auto-suffix duplicate slugs on save**

If two entities save the same slug, the second one gets "-2", then "-3", and so on.

Yes

**Auto 301 redirect from old URL to new URL**

Once live, every old "/{delin}{id}{delin}..." URL is 301-redirected to the new clean one. Preserves SEO ranking and old bookmarks.

Yes

**Fallback to legacy URL if clean URL not found**

If a visitor opens a clean URL that does not exist in the lookup map, send them to the legacy URL instead of a 404.

Yes

**Auto-clear cache and regenerate .htaccess on apply**

On Apply and Rollback, Sniarly + dispatcher-cache are cleared and .htaccess is regenerated. Leave ON unless you manage caches manually.

Yes

**Use the queue/cron for the initial map rebuild**

Recommended for large catalogs (10k+ rows). The first rebuild runs in the background instead of blocking your browser.

No

**Save settings** Saving updates settings only; the live storefront keeps the previously applied configuration until you re-Apply below.



## Pre-flight Status

- Ensure **Friendly URLs** are enabled.
- Confirm **.htaccess** file is writable.
- Verify **Shop Context** is correct.
- All green indicators mean the system is ready.

## Settings

- **Master switch:** Turn ON to enable Clean URLs.
- **Products:** Remove numeric IDs from product URLs.
- **Categories:** Remove numeric IDs from category URLs.
- **CMS pages & CMS categories:** Remove IDs from CMS URLs.
- **Keep “.html” suffix:** Recommended to avoid collisions.

## Safety Options

- **Auto-suffix duplicate slugs:** Adds -2, -3... for duplicate slugs.
- **Auto 301 redirect from old URLs:** Preserves SEO and bookmarks.
- **Fallback to legacy URL:** Sends visitors to old URL if clean URL not found.
- **Auto-clear cache & regenerate .htaccess:** Ensures URLs are applied properly.
- **Queue/cron for initial map rebuild:** Optional for large catalogs.

**Lookup map**  
Stores link\_rewrite → entity ID, kept fresh by save/delete hooks. The storefront uses this map to resolve clean URLs to the right product/category/CMS.

Products	Categories	CMS pages	CMS categories
25 rows in map	9 rows in map	5 rows in map	0 rows in map
<span style="color: green;">no conflicts</span>	<span style="color: green;">no conflicts</span>	<span style="color: green;">no conflicts</span>	<span style="color: green;">no conflicts</span>

Last update: 2024-05-20 05:46:55 Rebuild lookup map

**Conflict scanner**  
Two entities of the same type with the same slug in the same language will collide once IDs are removed. Resolve every row before applying Clean URLs for that entity.

Run conflict scan Scans the lookup map above. Rebuild the map first if you have just changed many slugs.

✓ No duplicate slugs found in the current map. You are clear to apply Clean URLs.

**Apply on the storefront**  
This is the deliberate action that rewrites PrestaShop's route patterns, regenerates .htaccess and clears caches. Settings above only become effective on the storefront after you click Apply.

✓ **Clean URLs are LIVE on the storefront.**  
Applied at: 2024-05-20 05:46:55  
Re-Apply after changing entity toggles or the .html suffix. Rollback to restore the original PrestaShop URL format.

**Use at your own risk**  
Apply / Rollback / Force restore directly modify the live storefront URL configuration. Before clicking any of these actions you must make a fresh database backup, a copy of your /override folder and a copy of your .htaccess file. Any downtime, broken links, lost rankings, third party integration breakage or any other site issue caused by these actions is your own responsibility. The module ships a Rollback button as a best-effort safety net, but a full backup is what guarantees you can always restore.

**Apply now**  
Activates the module's Dispatcher override on the storefront, rebuilds the slug u2192 id lookup map for every enabled entity, then regenerates .htaccess and clears caches. Your PrestaShop core PS\_ROUTE\_\* values stay at their defaults u2014 the module routes around them via the override. A single Rollback click is enough to fully undo this.

Apply with current settings

**Rollback**  
Deactivates the Clean URLs override on the storefront and clears caches. URLs immediately return to vanilla PrestaShop format (id-(slug)). Your settings above are kept so you can re-Apply later.

Rollback to previous URLs

**Advanced: force restore PrestaShop defaults**



## Lookup Map

- Shows Products, Categories, CMS pages, and CMS categories.
- **Rebuild lookup map** after changing slugs to update mappings.

## Conflict Scanner

- Checks for duplicate slugs that could collide.
- Resolve conflicts before applying Clean URLs.

## Apply on Storefront

- Click **Apply now** to implement Clean URLs.
- Use **Rollback** to restore previous URLs.
- **Advanced:** Force restore PrestaShop defaults if necessary.
- **Tip:** Always backup your database and .htaccess before applying changes.



## Indexation

Control simple noindex/nofollow rules for common pages. This affects the page-level meta robots value, not robots.txt.

### Indexation (Meta Robots)

Control simple noindex/nofollow rules for common pages. This affects the page-level meta robots value, not robots.txt.

[? How it works](#)

**Meta robots tuning**

Yes

When enabled, the module sets the page robots value (index/noindex + follow/nofollow) for selected page types.

---

**Noindex/Nofollow rules**

<p><b>Cart page</b></p> <p><input checked="" type="checkbox"/> On</p> <p><small>Apply: noindex, nofollow</small></p>	<p><b>Search results</b></p> <p><input checked="" type="checkbox"/> On</p> <p><small>Apply: noindex, follow</small></p>
<p><b>Checkout pages</b></p> <p><input checked="" type="checkbox"/> On</p> <p><small>Apply: noindex, nofollow</small></p>	<p><b>Category filters / parameters</b></p> <p><input checked="" type="checkbox"/> On</p> <p><small>Apply: noindex, follow</small></p>
<p><b>Login / Register</b></p> <p><input checked="" type="checkbox"/> On</p> <p><small>Apply: noindex, nofollow</small></p>	<p><b>Pagination (page &gt; 1)</b></p> <p><input type="checkbox"/> Off</p> <p><small>Apply: noindex, follow</small></p>
<p><b>Customer account area</b></p> <p><input checked="" type="checkbox"/> On</p> <p><small>Apply: noindex, nofollow</small></p>	<p><b>Out-of-stock product pages</b></p> <p><input type="checkbox"/> Off</p> <p><small>Apply: noindex, follow. Optional — many shops keep out-of-stock products indexed.</small></p>

**Custom URLs (noindex)**

Add specific storefront paths or full URLs to force noindex (requires Meta robots tuning enabled above). Paste a full URL or a path like /en/content/12-terms. Sub-paths match automatically (e.g. /en/promo also covers /en/promo/summer). End with \* for a prefix wildcard. Per-product or per-category catalog overrides still take priority.

URL or path  Also apply nofollow  Match query string exactly

ⓘ No custom noindex URLs yet.

**Extra directives (optional)**

<p>noarchive <input type="checkbox"/> Off</p>	<p>nosnippet <input type="checkbox"/> Off</p>
---	---

## Meta Robots Tuning

- Enable **Meta robots tuning** to control page-level index/noindex and follow/nofollow rules.



## Noindex / Nofollow Rules

- **Cart page:** noindex, nofollow
- **Checkout pages:** noindex, nofollow
- **Login / Register:** noindex, nofollow
- **Customer account area:** noindex, nofollow
- **Search results:** noindex, follow
- **Category filters / parameters:** noindex, follow
- **Pagination (page > 1):** optional, off by default
- **Out-of-stock product pages:** optional, off by default

## Custom URLs (noindex)

- Add specific URLs or paths to force noindex.
- Use wildcards (\*) for prefix matching.
- Optionally apply **nofollow** or match query strings exactly.

## Extra Directives (Optional)

- **noarchive:** Prevent search engines from storing cached copies.
- **nosnippet:** Prevent search engines from showing snippets in search results.

Click **Save settings**, to apply changes.

## Robots & LLMs

Manage robots.txt, llms.txt and llms-full.txt in one place. Generate best-practice defaults and keep your site discoverable.

### Robots.txt

**Robots & LLMs** How it works

Manage robots.txt, llms.txt and llms-full.txt in one place. Generate best-practice defaults and keep your site discoverable.

<https://aiseooptimizer.bestprestashopmodules.net/robots.txt>

<https://aiseooptimizer.bestprestashopmodules.net/llms.txt>

<https://aiseooptimizer.bestprestashopmodules.net/llms-full.txt>

**Quick actions**  
Open live files or generate defaults.

[Open robots.txt](#) [Open llms.txt](#) [Open llms-full.txt](#)

**robots.txt**

Edit the content of your robots.txt or generate a recommended default.

```

# robots.txt automatically generated by Prestashop e-commerce open-source solution
# https://www.prestashop-project.org
# This file is to prevent the crawling and indexing of certain parts
# of your site by web crawlers and spiders run by sites like Yahoo!
# and Google. By telling these "robots" where not to go on your site,
# you save bandwidth and server resources.
# For more information about the robots.txt standard, see:
# https://www.robotstxt.org/robotstxt.html

User-agent: *

# Allow directives for modules
Allow: */modules/*.css
Allow: */modules/*.js
Allow: */modules/*.png
Allow: */modules/*.jpg
*****

File path on server: /home/bestprestashopmodules.net/subdomains/aiseooptimizer/robots.txt

```

[Generate robots.txt](#) [Save & Update robots.txt](#)



## FME Modules

- Control which parts of your site search engines can crawl.
- Edit manually or **Generate robots.txt** for recommended settings.

Click **Save & Update robots.txt**, to apply changes.

## Llms.txt

**llms.txt**  
A lightweight file to help AI systems find your best public pages.

Enable Llms.txt  
Yes

```
# Purpose: help AI systems discover high-quality pages.  
  
Site: developerDemos  
Base: https://aiseoptimizer.bestprestashopmodules.net  
Sitemap: https://aiseoptimizer.bestprestashopmodules.net/sitemap.xml  
  
Policies:  
- Prefer canonical public pages (products, categories, CMS).  
- Avoid account/checkout/cart/search URLs.
```

File path on server: */home/bestprestashopmodules.net/subdomains/aiseoptimizer/llms.txt*

Generate Llms.txt Save & Update Llms.txt

- Helps AI systems find your best public pages.
- Enable/disable and edit directly.
- Click **Save & Update llms.txt** to apply.

## Llms-full.txt

**llms-full.txt**  
A more detailed file for AI systems. Keep it public and high quality.

Enable Llms-full.txt  
Yes

```
# llms-full.txt generated by FMM AI SEO Optimizer  
  
Site: developerDemos  
Base: https://aiseoptimizer.bestprestashopmodules.net  
Sitemap: https://aiseoptimizer.bestprestashopmodules.net/sitemap.xml  
  
Recommended sources:  
- Products and categories  
- CMS pages (shipping, returns, legal)  
  
Not recommended:  
- Cart, checkout, account, login, search
```

File path on server: */home/bestprestashopmodules.net/subdomains/aiseoptimizer/llms-full.txt*

Generate Llms-full.txt Save & Update Llms-full.txt

- Provides a more detailed file for AI systems.
- Keep public and high-quality pages listed.
- Edit and **Save & Update llms-full.txt**, to apply.



## Sitemap and Feeds

Generate fast, dynamic XML sitemap with pagination plus one-click ping to search engines.

### Sitemap Settings

- **Pages to include:** Select Products, Categories, CMS pages, CMS categories, Brands, Suppliers, and Other pages.
- **URLs per page:** Recommended 45,000 (max 50,000).
- **Include images:** Yes/No for product images.
- **Include hreflang:** Enable for alternate language URLs.
- **Auto-ping search engines:** Enable to notify Google/Bing after major changes.

### Sitemap & Feeds

Fast, dynamic XML sitemap with pagination. Optional images + hreflang support, plus one-click ping to search engines.

Enabled <https://aiseooptimizer.bestprestashopmodules.net/module/fmmaiseooptimizer/sitemap>

**Quick actions**  
Open your sitemap or ping search engines.

[Open sitemap.xml](#) [Ping search engines](#)

PRODUCTS

25

CATEGORIES

9

CMS PAGES

5

CMS CATEGORIES

1

MANUFACTURERS

2

SUPPLIERS

2

OTHER PAGES

6

**Sitemap settings**  
These options affect live sitemap output. No cron required.

**Pages to include in sitemap**  
Select which sections should be present in sitemap index.

<input checked="" type="checkbox"/> All	<input checked="" type="checkbox"/> Products	<input checked="" type="checkbox"/> Categories
<input checked="" type="checkbox"/> CMS	<input checked="" type="checkbox"/> CMS categories	<input checked="" type="checkbox"/> Suppliers
<input checked="" type="checkbox"/> Brands (manufacturers)	<input checked="" type="checkbox"/> Other pages	

Tip: If you tick "All" it enables everything automatically.

**URLs per page (pagination)**  
Number of URLs per sitemap page. Recommended: 45000 (max 50000).

**Enable sitemap**  
If disabled, /sitemap.xml returns 404.

**Include images (products)**  
Adds product cover images to the product sitemap.

**Include hreflang**  
Adds alternate language URLs for multi-language SEO.

**Auto-ping search engines**  
When enabled, you can ping Google/Bing after big catalog changes.

**Priority / Change frequency**  
These values are added to each <url> entry.

<p><b>Products</b></p> <p><input type="text" value="weekly"/> <input type="text" value="0.1"/></p> <p><b>CMS + CMS categories</b></p> <p><input type="text" value="monthly"/> <input type="text" value="0.2"/></p> <p><b>Suppliers</b></p> <p><input type="text" value="weekly"/> <input type="text" value="0.1"/></p>	<p><b>Categories</b></p> <p><input type="text" value="weekly"/> <input type="text" value="0.2"/></p> <p><b>Brands (manufacturers)</b></p> <p><input type="text" value="weekly"/> <input type="text" value="0.1"/></p> <p><b>Other pages</b></p> <p><input type="text" value="weekly"/> <input type="text" value="0.3"/></p>
--	---

[Save sitemap settings](#)

**How it works**  
This sitemap is generated on-demand and paginated automatically (page size: ~45k URLs). It stays up-to-date without cron or file writes.

[Preview](#)



## Priority & Change Frequency

- Assign **frequency** (e.g., daily, weekly, monthly) and **priority** for each content type: Products, Categories, CMS & CMS categories, Brands, Suppliers, Other pages.
- Click **Save sitemap settings** to apply changes.

**Tip:** The sitemap is generated on-demand and paginated automatically. No cron or file writes are needed to keep it up-to-date.

## Canonical & Hreflang

Apply the basic canonical and hreflang tags for your shop pages. Helps reduce duplicate content and improves multi-language SEO.

### Canonical & Hreflang

Basic canonical and hreflang tags for your shop pages. Helps reduce duplicate content and improves multi-language SEO.

? How it works

**Enable canonical tags**

Yes

**Pagination canonical**

Self (each page canonical to itself) ▼

**Filtered / parameter URLs canonical**

Clean base URL (remove parameters) ▼

**Strip parameters from canonical (CSV)**

utm\_source,utm\_medium,utm\_campaign,utm\_term,utm\_content,gclid,fbclid

*Comma-separated parameter names to remove from the canonical URL.*

**Enable hreflang tags**

Yes

**Add x-default**

Yes

Save settings

- **Enable canonical tags:** Activate to reduce duplicate content and improve SEO.
- **Pagination canonical:** Choose how paginated pages point to themselves or other pages.
- **Filtered/parameter URLs canonical:** Select whether to remove query parameters for clean URLs.
- **Strip parameters:** Add comma-separated URL parameters to remove from canonical links (e.g., utm\_source, utm\_medium, gclid).
- **Enable hreflang tags:** Activate for multi-language SEO.
- **Add x-default:** Recommended for default language pages.

Click **Save settings**, to apply changes.



## Schema & Social

Manage Open Graph, Twitter Cards, and social preview essentials.

### Schema & Social

Manage Open Graph, Twitter Cards, and social preview essentials. These tags are injected automatically into the front-office <head>. [FAQ Manager \(FAQPage JSON-LD\)](#)

Open Graph: Enabled
Twitter Cards: Enabled
Pinterest: Enabled
JSON-LD schemas: Enabled

[? How it works](#)

**How to test**

View Source on a product page: check og:\* / twitter:\* and application/ld+json.

Configure

### ⚙ Social settings

Enable/disable social preview tags. Changes apply instantly on front office.

**Open Graph (Facebook)**  
Adds og:title, og:description, og:image, etc.

Enabled

**Twitter Cards**  
Adds twitter:card, twitter:title, twitter:image, etc.

Enabled

**Pinterest Rich Pins**  
Keeps social meta consistent for Pinterest.

Enabled

Save social settings

### 🔗 Schema JSON-LD settings

Enable basic structured data. This improves rich results eligibility.

**Organization**  
Adds Organization schema (name, url, logo).

Enabled

**Website + SearchAction**  
Adds WebSite schema with internal search action.

Enabled

**Breadcrumb**  
Adds BreadcrumbList JSON-LD on category, product, CMS, search, and 404 pages (when at least two items are available).

Enabled

**Product**  
Adds Product + Offer schema on product pages.

Enabled

### 📄 Breadcrumb JSON-LD (labels & extra steps)

Tune anchor text per language and optional middle steps. Leave category IDs at 0 to disable. These settings apply only to structured data, not theme breadcrumbs.

en

**Home (first crumb)**

Home

**Search page (prefix before query)**

Search

**404 page (second crumb)**

Page not found

**Extra category before product path**  
PrestaShop category ID inserted after Home (e.g. hub category). 0 = off.

0

**Extra CMS category before CMS page**  
CMS category ID after Home. 0 = off.

0

**CMS category trail**  
Include parent CMS categories for the page's CMS category.

Disabled

Save schema settings
Open Google Rich Results Test

## Social Settings

- **Open Graph (Facebook):** Add title, description, and image for Facebook previews.
- **Twitter Cards:** Enable Twitter-specific meta tags (title, image, etc.).
- **Pinterest Rich Pins:** Keep social metadata consistent for Pinterest.
- Click **Save social settings** to apply.



## Schema JSON-LD Settings

- **Organization:** Adds site name, URL, and logo.
- **Website + SearchAction:** Adds internal search schema.
- **Breadcrumb:** Adds breadcrumb structured data on categories, products, CMS, search, and 404 pages.
- **Product:** Adds Product and Offer schema on product pages.
- Click **Save schema settings** to apply.

## Breadcrumb JSON-LD Labels & Extra Steps

- Set labels for Home, Search page, and 404 page.
- Optional: Add extra category or CMS steps before products or CMS pages.
- Adjust CMS category trail (include parent categories).
- **Test:** Use **Open Google Rich Results Test** to validate structured data.

## FAQ Manager

Create multilingual FAQ blocks for your store products. Visible accordions and FAQ Page JSON-LD are output on product pages when enabled.

## FAQ & Schema Settings

- **Show FAQ on storefront:** Enable to display FAQ accordions on product pages.
- **FAQPage JSON-LD:** Enable to add structured data for rich results in search engines.
- **Minimum Q&A for schema:** Set the minimum number of Q&A pairs required for rich results (default: 2).

Click **Save settings**, to apply.



## Create New FAQ Set

**New FAQ set**

Apply FAQ to

All products
  Specific products
  Products in selected categories

Priority on the storefront: specific product FAQ overrides category FAQ, which overrides "all products".

**Products**

Search and add one or more products.

**Status**

Yes

[English \(English\) \(en\)](#)

---

**Question**

**Answer**

Normal **B** *I* U

Use the toolbar for bold, italic, lists, links, text color, and paragraph styles.

Remove

- Apply FAQ to **All products**, **Specific products**, or **Products in selected categories**.
- Search and add products if using specific products.
- Toggle **Status** to enable or disable the FAQ set.
- Enter questions and answers for each product in the provided editor.
- Click **Add question** to add more Q&A pairs.

Click **Save FAQ** to store the FAQ set.

## Product FAQ Sets

Displays all created FAQ sets with their status, assigned products, default language Q&A, and last updated time.

Product FAQ sets				
Status	Applies to	Q&A (default lang)	Updated	Actions
Enabled	Categories: Accessories, Stationery, Home Accessories, Art	1	2026-05-21 08:28:28	
Disabled	3 products	1	2026-05-21 08:27:22	



## Linking and Stats

First-party traffic analytics: see which sites send visitors to your shop and which landing pages they hit. No Google Tag Manager required; data stays in your database. Internal link suggestions can be added later on top of this foundation.

### Linking & Stats Overview

Track and analyze your shop traffic easily:

- **Page Views:** Total hits your pages received.
- **Tracked Rows:** Number of referrer × landing page combinations tracked.
- **Search Traffic Share:** Organic search hits percentage.

### Top Referrers & Landing Pages:

- See which domains send visitors and which pages they land on.
- Direct traffic is counted as (**direct**).

### Recent Activity:

- Displays the latest page hits with their referrer and landing page.
- Helps identify where traffic is coming from in real time.

### Settings Tips:

- Enable front-office tracking to record all visitor traffic.
- Skip known bots for cleaner analytics.
- Choose whether to store search queries for privacy.



### Linking & Stats

First-party traffic analytics: see which sites send visitors to your shop and which landing pages they hit. No Google Tag Manager required — data stays in your database. Internal link suggestions can be added later on top of this foundation.

[How it works](#)

### Front-office tracking

Record traffic sources  Yes

When enabled, each front-office page view (GET) updates aggregated referrer and landing stats. Same-shop referrers are ignored.

Skip known bots  Yes

Store search query (when detected)  Yes

Turn off to only store the search engine name, not the q= parameter (stronger privacy).

[Save settings](#)

SUMMARY FOR [Export CSV](#) [Clear shop data](#)

7 days 30 days 90 days

Tables on this page use the period you select.

**PAGE VIEWS**

**74**

Hits in this period

**TRACKED ROWS**

**72**

Referrer x landing pairs

**SEARCH TRAFFIC SHARE**

**0%**

0 organic hits

#### Top referrer domains

DOMAIN	HITS
(direct)	74

#### Top landing URLs

PATH	HITS
/module/fmaiseoptimizer/sitemap	2
/	2
/16-mountain-fox-notebook.html	1
/7-mug-the-adventure-begins.html	1
/8-mug-today-is-a-good-day.html	1

#### Search engines

No search-engine referrers in this period.

#### Top search queries

QUERY	ENGINE	HITS
No queries stored (disabled or no organic traffic).		

#### Recent activity

LAST HIT	REFERRER	LANDING	ENGINE	HITS
2026-05-21 11:49:27	(direct)	/module/fmaiseoptimizer/sitemap		2
2026-05-21 07:36:54	(direct)	/llms-full.txt		1
2026-05-21 07:36:52	(direct)	/llms.txt		1
2026-05-21 07:19:40	(direct)	/		2
2026-05-21 03:19:56	(direct)	/content/legal-notice		1

**Internal linking (planned)**

The database already includes a table for internal link suggestions. A future update can list smart links, anchor ideas, and orphan pages here — optionally powered by the AI Tools tab.

No search-engine referrers in this period.

QUERY	ENGINE	HITS
No queries stored (disabled or no organic traffic).		

#### Recent activity

LAST HIT	REFERRER	LANDING	ENGINE	HITS
2026-05-21 11:49:27	(direct)	/module/fmaiseoptimizer/sitemap		2
2026-05-21 07:36:54	(direct)	/llms-full.txt		1
2026-05-21 07:36:52	(direct)	/llms.txt		1
2026-05-21 07:19:40	(direct)	/		2
2026-05-21 03:19:56	(direct)	/content/legal-notice		1

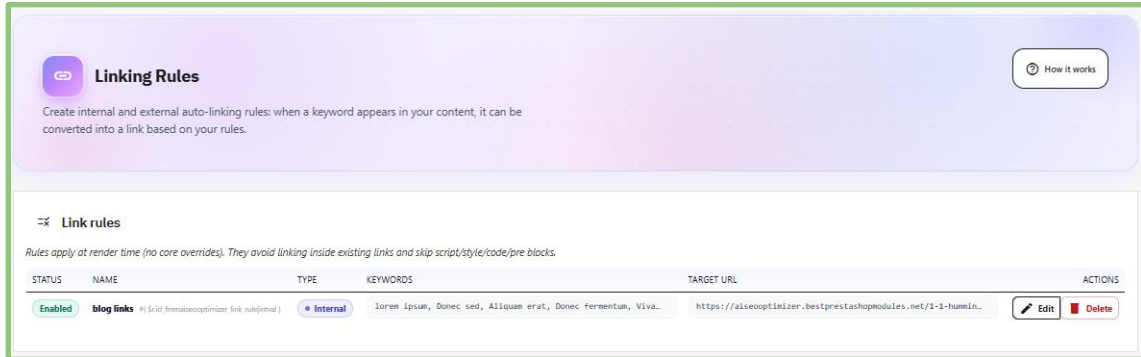
**Internal linking (planned)**

The database already includes a table for internal link suggestions. A future update can list smart links, anchor ideas, and orphan pages here — optionally powered by the AI Tools tab.



## Linking Rules

Create internal and external auto-linking rules; when a keyword appears in your content, it can be converted into a link based on your rules.



Create rules to automatically turn keywords into links in your content.

### Add a New Rule:

The 'Add new rule' form includes the following fields and options:

- Enabled:** A toggle switch set to 'Yes'.
- Rule name:** A text input field.
- Type:** A dropdown menu currently set to 'Internal'. A note below says 'External links can be marked nofollow/sponsored/ugc.'
- Keywords:** A text input field. A note below says 'Comma-separated phrases. Example: SEO, meta title, canonical'.
- Target URL:** A text input field. A note below says 'Full URL or path, e.g. /contact or https://... Must be an absolute URL.'
- Where to apply:** Checkboxes for 'Products', 'Categories', and 'CMS', all of which are checked.
- Matching:** Checkboxes for 'Whole word' (checked) and 'Case sensitive'.
- Limits:** Two input fields: 'Max links per page' (set to 3) and 'Max per keyword' (set to 1).
- Link attributes:** Checkboxes for 'Open in new tab', 'rel=nofollow', 'rel=sponsored', and 'rel=ugc', all of which are unchecked.

At the bottom, there are 'Save rule' and 'Cancel' buttons.

- Enable the rule.
- Select **Type**: Internal or External.
- Enter **Keywords** (comma-separated).
- Enter the **Target URL**.
- Choose where to apply: Products, Categories, CMS.
- Set matching options: Whole word, Case sensitive.
- Define limits: Max links per page, Max per keyword.
- Set link attributes: Open in new tab, nofollow, sponsored, UGC.



## Preview / Test:

Paste HTML to see how links appear.

Preview / test

Paste HTML snippet

▶ Run preview

**Save Rule:** Click **Save Rule** to apply.

**Note:** Rules skip existing links and code blocks automatically.

## System diagnostics

Check your system status and AI SEO module health in one place.

### Overview

- **Environment Checks:** Verifies hooks, HTTP client, DOM, and cache directory.
- **Runtime Info:** Displays PHP, PrestaShop, Module versions, and Front Office status.
- **Data Footprint:** Shows counts of redirects, 404 errors, referrer rows, and meta rules.

**Background Queue:** Monitors pending jobs for bulk AI tasks and crawlers.

**Site Scanner:** Displays the last crawler runs and their status.

**AI Connectivity:** Test API connection to your AI provider. Click **Run AI Test** to verify.

**Registered Hooks:** Lists all hooks registered with your module, ensuring proper integration.

**Tip:** Keep your cache directory writable and run AI tests to maintain smooth operation.



### System diagnostics

How it works

Environment checks, background queue snapshot, and a one-click AI connectivity test. Change API keys in Settings.

⚙️ Open Settings

HOOKS

OK

Module registrations

HTTP CLIENT

OK

cURL

DOM

OK

SEO Analysis

CACHE DIR

Writable

var/cache

#### Runtime

PHP	8.1.27
PrestaShop	9.1.1
Module	v1.0.0
Front office	Active

#### Data footprint

Redirects	0
404 rows	8
Referrer rows	72
Meta rules	0

#### Background queue

Jobs for future bulk AI and crawlers. Counts are per shop.

No jobs in database yet.

Pending:0

#### Site scanner (runs)

Last recorded crawler executions for this shop.

ID	TYPE	STATUS	URLS	STARTED
2	quick	completed	35 / 35	2026-05-21 03:19:40
1	quick	completed	35 / 35	2026-05-20 05:40:03

#### AI connectivity

Uses the provider and key from Settings. Sends one minimal completion request.

Last test: 2026-05-21 09:06:37 — Failed

HTTP 400

Run AI test

Provider: gemini

#### Registered hooks

displayHeader

displayAfterTitleTag

displayBackOfficeHeader

displayBeforeBodyClosingTag

displayFooterProduct

actionAdminControllerSetMedia

actionFrontControllerSetMedia

actionDispatcher

actionFrontControllerSetVariables

moduleRoutes

actionProductSave

actionProductDelete

actionCategorySave

actionCategoryDelete

actionCmsSave

actionManufacturerSave

actionSupplierSave

actionObjectCMSAddAfter

actionObjectCMSUpdateAfter

actionObjectCMSDeleteAfter

actionObjectCMSCategoryAddAfter

actionObjectCMSCategoryUpdateAfter

actionObjectCMSCategoryDeleteAfter

actionDispatcherBefore

actionAfterLoadRoutes

actionProductGridDefinitionModifier

actionProductGridQueryBuilderModifier

actionCategoryGridDefinitionModifier

actionCategoryGridQueryBuilderModifier

actionCategoryFormBuilderModifier

actionAfterUpdateCategoryFormHandler

actionAfterCreateCategoryFormHandler

displayAdminProductsExtra

actionObjectProductUpdateBefore

actionObjectCategoryUpdateBefore

actionObjectProductAddBefore

actionObjectCategoryAddBefore

actionObjectCMSAddBefore

actionObjectCMSUpdateBefore

actionObjectCMSCategoryAddBefore

actionObjectCMSCategoryUpdateBefore



## Product/Category Listing Interface

The products and category listing page provides a centralized view of all store products along with their SEO and indexing status. From this screen, administrators can quickly search, filter, and manage product/category records.

**Products (25)**

Filter by categories  Bulk actions

ID	Image	Name	Reference	Category	Price (tax excl.)	Price (tax incl.)	Quantity	Status	SEO Content	Indexation	Actions
<input type="checkbox"/>	Min Max	<input type="text"/>	<input type="text"/>	<input type="text"/>	Min Max		Min Max	All	<input type="text"/> Search		
<input type="checkbox"/>		Asus GeForce GTX 1660 Graphic Card		GPU	\$210.00	\$210.00	1000	<input checked="" type="checkbox"/>	SEO: Poor 25/100	Index Follow	
<input type="checkbox"/>		Nvidia GeForce GT 710 Graphic Card		Home	\$250.00	\$250.00	1000	<input checked="" type="checkbox"/>	SEO: Poor 25/100	Index Follow	
<input type="checkbox"/>		Intel Processor Core i9		Home	\$90.00	\$90.00	1000	<input checked="" type="checkbox"/>	SEO: Poor 25/100	Index Follow	
<input type="checkbox"/>		Intel Processor Core i5		Home	\$60.00	\$60.00	1000	<input checked="" type="checkbox"/>	SEO: Poor 25/100	Index Follow	
<input type="checkbox"/>		Intel Processor Core i7		Home	\$90.00	\$90.00	1000	<input checked="" type="checkbox"/>	SEO: Poor 25/100	Index Follow	

1 < **1** > 2 Viewing 1-20 out of 25 (page 1 / 2) Items per page: 20

**Categories (4)**

Bulk actions

ID	Name	Description	Products	Position	Displayed	SEO Content	Indexation	Actions	
<input type="checkbox"/>	<input type="text"/>	<input type="text"/>		<input type="text"/>	All	<input type="text"/> Search			
<input type="checkbox"/>	3	Clothes	Discover our favorites fashionable discoveries, a selection of cool items to integrate in your wardrobe. Compose a unique style with personality which	2	1	<input checked="" type="checkbox"/>	SEO: Poor 0/100	Index Follow	
<input type="checkbox"/>	6	Accessories	Items and accessories for your desk, kitchen or living room. Make your house a home with our eye-catching designs.	11	2	<input checked="" type="checkbox"/>	SEO: Poor 0/100	Index Follow	
<input type="checkbox"/>	9	Art	Framed poster and vector images, all you need to give personality to your walls or bring your creative projects to life.	7	3	<input checked="" type="checkbox"/>	SEO: Poor 0/100	Index Nofollow	
<input type="checkbox"/>	10	GPU		1	4	<input checked="" type="checkbox"/>	SEO: Poor 0/100	Index Follow	



## Product - SEO Analysis

View read-only checks for the current back-office language. Use the quick links to easily update meta information or the focus phrase to boost your results.

## SEO/Readability Problems & Improvements

This section provides a clear overview of your product, highlighting problems, suggested improvements, and positive results.

SEO and readability problems are highlighted, like:

- Add **internal links** to related categories or products in your description.
- Keep **Meta titles short** (50–60 characters) and include the **focus phrase**.
- Shorten long sentences and use simpler words.

## Good Results

Good practices already done by admin can also be seen under this section, like:

- All product images have **alt text**.
- Meta description length is **reasonable** for snippets.



## Disclaimer

---

It is highly recommended to backup your server files and database before installing this module.

No responsibility will be taken for any adverse effects occurring during installation.

**It is recommended you install on a test server initially to carry out your own testing.**

## Support

---

If you need more information or have any questions or problems, please refer to our support helpdesk:

You can log a ticket and a support technician can assist you further.

## Customization

---

If you have requirements that are not covered by our module and you need to have our module customized, feel free to contact us through the support helpdesk.