



# FME MODULES



PRESTASHOP MODULE

USER GUIDE



## INTENDED AUDIENCE

The content of this document is designed to facilitate the users - managers, supervisors, and others of the **Length & Width (Area) Based pricing - CSV Pricing** PrestaShop Module. A step by step instruction has been added to this document to help users to install the module on PrestaShop.

As a safe practice always backup your files and database before installing any module on PrestaShop. If you are looking for someone to install the module, we can do it for you as well. Just go to the following link and let support know the order id to expedite the installation process.

Once you have installed please see the User Guide to help you understand how to use the module to its full capacity. If you still have questions feel free to contact us on the support platform where you bought this module.

If you have any custom requirements feel free to touch base with us.



## OVERVIEW

PrestaShop CSV Based Price module allows you to use CSV file for calculating product prices. Based on the values entered by users in product attributes, this add-on will scan the associated CSV and will show the price accordingly. Attributes combination builder is included in this module.

## FEATURES

PrestaShop CSV Pricing Module offers dynamic product pricing feature. It allows you to use CSV file for product pricing. This file contains custom price for different attributes' combinations which may be length and width, or any custom attribute. When a user enters the values in these fields, this PrestaShop Pricing extension will scan the associated CSV file looking for a price match.

The name of column and row in spreadsheet can be defined. Single spread sheet can be used for multiple products' pricing. Following are the key features of this module.

### Features – PrestaShop CSV Pricing

1. Provides you matrix, tabular pricing for your products.
2. Upload multiple CSVs; a smart CSV File Manager is included in this PrestaShop price updater plug-in.
3. Custom labels for spreadsheet column and row
4. Includes attributes combination builder, edit any combination and its impact from back office. A new tab for each product is created to achieve this
5. Single spread sheet can be used for multiple products pricing



## TABLE OF CONTENTS

INTENDED AUDIENCE.....	ii
OVERVIEW.....	iii
FEATURES.....	iii
TABLE OF CONTENTS.....	iv
INSTALLATION INSTRUCTIONS.....	v
USER GUIDE.....	vi
HOW TO CONFIGURE THE MODULE.....	vi
MANAGE CSV PRICING FILES.....	vii
MANAGE CSV PRICING.....	viii
ADD NEW CSV.....	ix
DISCLAIMER.....	x
SUPPORT.....	x
CUSTOMIZATION.....	x



## INSTALLATION INSTRUCTIONS

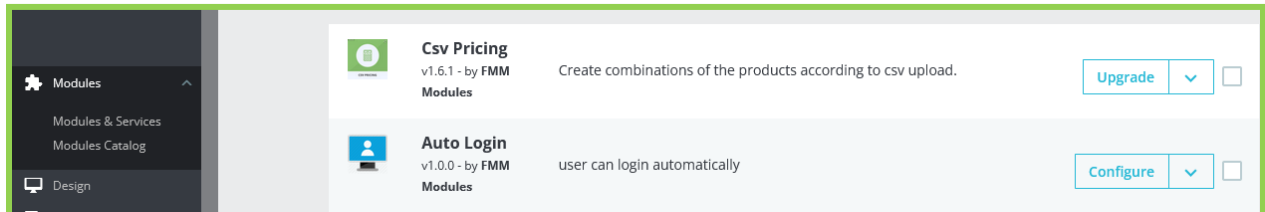
1. Log in to **PrestaShop** administration panel, go to **Modules** → Click Add new module
2. Select **CSV Pricing.zip** which you downloaded and click upload this Module
3. Scroll down and find **CSV Pricing** and click **Install**
4. **Clear Cache** in **Advance Parameters** → **Performance**



## USER GUIDE

### HOW TO CONFIGURE THE MODULE

At the back office, go to **Modules > Modules & Services > CSV Pricing**. Scroll down and click on **Configure** to Continue.



Here you will be able to configure the following settings:

The 'SETTINGS' page for the CSV Pricing module includes the following configuration options:

- Enable?** A toggle switch currently set to 'YES'.
- Selection Method on frontend:** Radio buttons for 'Drop Down' (selected) and 'Text Box'.
- Label for Columns:** A text input field containing 'Width' and a dropdown menu set to 'en'.
- Label for Rows:** A text input field containing 'Height' and a dropdown menu set to 'en'.
- Save:** A button with a floppy disk icon in the bottom right corner.

- **Enable:** Click Yes to enable the module.
- **Selection Method on Frontend:** Select how user will select the input value, either Dropdown or Textbox.
- **Label for Columns**
- **Label for Rows**



## MANAGE CSV PRICING FILES

Please follow these instructions to make a valid CSV file.

- Open Microsoft Excel and fill the data **Columns** will be as Width or 'x' and **Rows** as Height or 'y'

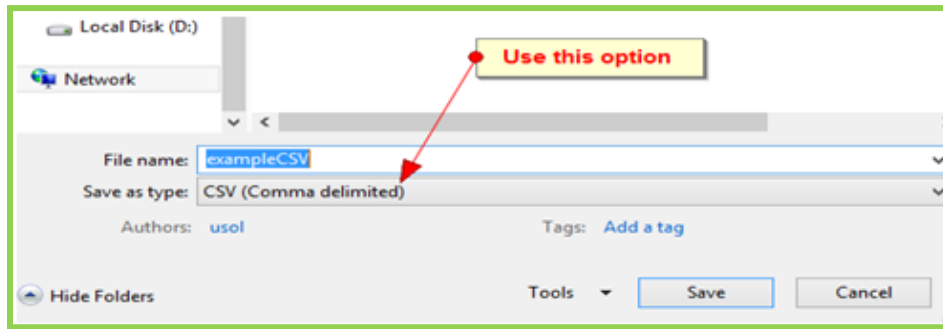
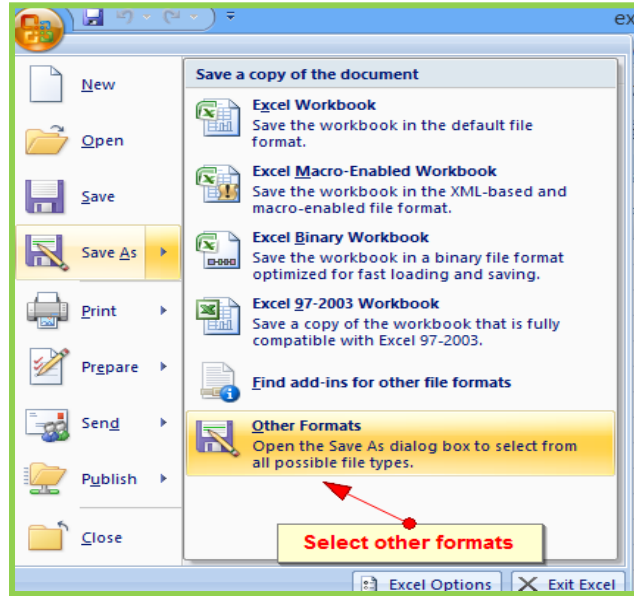
	A	B	C	D	E	F	G	H
1		24	30	36	42	48		
2	30	5	41.5	44.74	48.01	51.25		
3	36	41.26	44.74	48.25	51.74	55.22		
4	42	44.27	48.01	51.74	55.47	59.21		
5	48	47.29	51.25	55.22	59.21	63.17		
6	54	50.28	54.5	58.72	62.93	67.16		
7	60	53.29	57.76	62.21	66.69	71.12		
8	66	56.32	61	65.72	70.4	75.11		
9	72	59.31	64.27	69.19	74.15	79.08		
10	78	62.34	67.51	72.96	77.88	83.04		
11	84	65.33	70.76	76.19	81.6	87.05		
12	90	68.36	74.02	79.68	85.36	91.02		
13								
14								
17								
18								
19								
20								

- Fill the cells relative to both 'x' and 'y' for example if **x=36, y=54** fill the price in field shown below in our case its **58.72** so as for **x=42, y=54** is **62.93** and so on.

	A	B	C	D	E	F	G	H
1		24	30	36	42	48		
2	30	5	41.5	44.74	48.01	51.25		
3	36	41.26	44.74	48.25	51.74	55.22		
4	42	44.27	48.01	51.74	55.47	59.21		
5	48	47.29	51.25	55.22	59.21	63.17		
6	54	50.28	54.5	58.72	62.93	67.16		
7	60	53.29	57.76	62.21	66.69	71.12		
8	66	56.32	61	65.72	70.4	75.11		
9	72	59.31	64.27	69.19	74.15	79.08		
10	78	62.34	67.51	72.96	77.88	83.04		
11	84	65.33	70.76	76.19	81.6	87.05		
12	90	68.36	74.02	79.68	85.36	91.02		
13								
14								
15								
16								

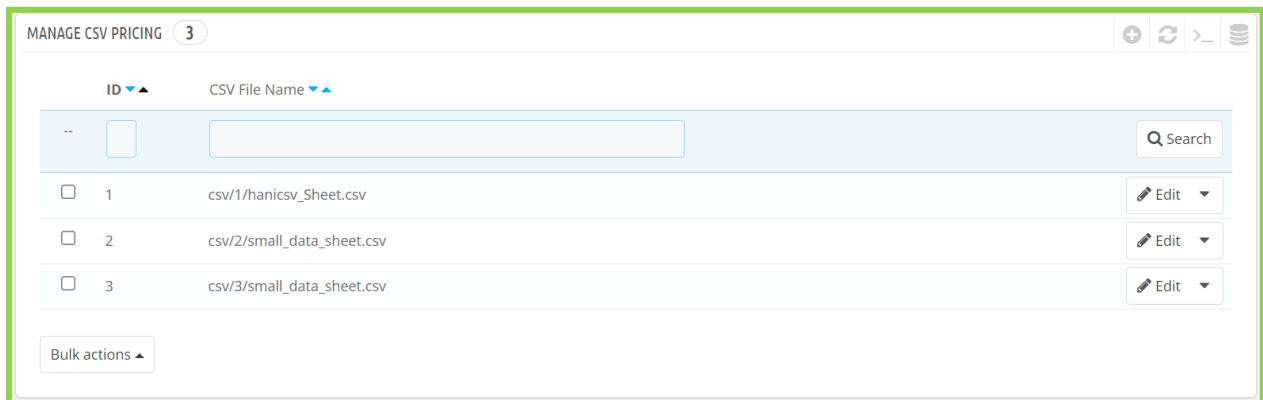
if width=36 and height=54 price will be 58.72

- Use Save as... **'other formats'** and select 'csv comma delimited' and save



## MANAGE CSV PRICING

You can manage CSV Pricing by going to **CSV Pricing > Manage CSV Pricing**.







## ADD NEW CSV

- Click **Add New** button at top right of window.
- Click browse and select **.csv** file.
- Click Products and assign it to products by simple checking it.
- It will take a while to upload please be Patient.
- Check those products on front end you will see combinations from csv file generated.
- If you don't see any combination than check permissions for **'/img/csv'** directory as mentioned above in installation instructions.

Product Csv

Products

Products Attach Products

Check All

Search:  Show / hide columns

ID	Photo	Name	Price	Categories	Stock
<input checked="" type="checkbox"/> 8		Carpet	10.000000	Home,Women	Yes
<input type="checkbox"/> 13		Skirting	11.000000	Home,Women	Yes
<input type="checkbox"/> 14		Glass	11.000000	Home,Women	Yes

ID Photo Search By Name Search By Price Categories Stock

Showing 1 to 3 of 3 entries First Previous 1 Next Last

Cancel Save and stay Save



## DISCLAIMER

It is highly recommended to backup your server files and database before installing this module.

No responsibility will be taken for any adverse effects occurring during installation.

**It is recommended you install on a test server initially to carry out your own testing.**

## SUPPORT

If you need more information or have any questions or problems, please refer to our support helpdesk:

You can log a ticket and a support technician can assist you further.

## CUSTOMIZATION

If you have requirements that are not covered by our module and you need to have our module customized, feel free to contact us through support helpdesk.